

Kings Heath Neighbourhood Forum

1st October 2025

West Midlands Rail Programme, working together to build tomorrows railway for the West Midlands:



Contents

- 1. Introductions**
- 2. Wider Overview**
- 3. Progress Update**
- 4. Project Milestones**
- 5. Community Engagement**
- 6. Artwork at the stations**
- 7. Travel information**

The background is a solid teal color. On the left side, there are several white geometric shapes: a large diamond, a triangle, and a trapezoid, all pointing towards the right. These shapes are partially cut off by the left edge of the frame.

Wider Overview of the railway industry

Wider Update

- State of Change – new government continuing to progress Rail Reform and plan to set up Great British Railways (timescales uncertain),
- West Midlands Trains (WMT), operators of West Midlands Railway and the sole provider of the train service at the Camp Hill Line stations, will be going into public ownership on the 1st of February 2026.
- WMRE are continuing to work with WMT and the Department for Transport to minimise any impact on day-to-day operations and conversations have begun to discuss how this will look when the stations are being entered into service next year.



Project Progress Update

Delivering the Camp Hill Line Trains Stations

WEST MIDLANDS RAIL
PROGRAMME

The construction of the new Camp Hill Line stations is now in an advanced stage, a highly complex infrastructure project.

Overcoming Challenges

The primary difficulty has been conducting work while the railway remains operational, which limits construction time. To combat this & accelerate the schedule, the project team:

- Secured **additional full closures of the railway** during Summer 2025 in close cooperation with rail industry partners.
- **Adjusted the delivery strategy** by varying contracts and bringing in **specialist staff and contractors**.

Specific Design Issues

Progress was affected by several site-specific challenges that required redesigns, including:

- Redevelopment of the **drainage system at Pineapple Road**.
- Changes to the **station lift designs** to significantly improve their resilience and long-term reliability.

Utility and Access Agreements

A complex & ongoing task involves designing station assets around **existing utilities** or diverting them. The team is dedicated to minimizing future construction and maintenance costs. To mitigate long-term risk and potential disruption to passengers, the team is working intensively with **utility companies, Network Rail (NR) & West Midlands Trains (WMT)** to finalize all necessary **access agreements & arrangements**.

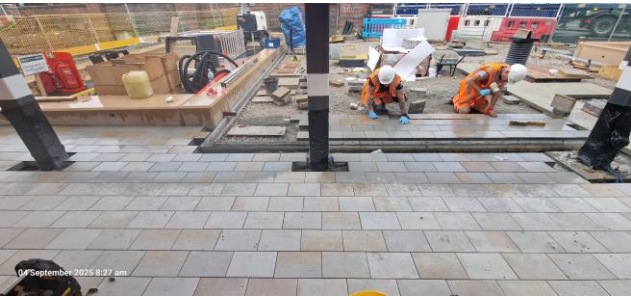


Kings Heath Station Update

Progress Update Kings Heath

WEST MIDLANDS RAIL
PROGRAMME

KINGS HEATH



PAVING WORKS



STAIRWAY ROOF CLADDING



LMR BRICKWORK



HIGHBURY PARK RETAINING WALL



EMBANKMENT GEO-CELL

Progress Update Pineapple Road

WEST MIDLANDS RAIL PROGRAMME



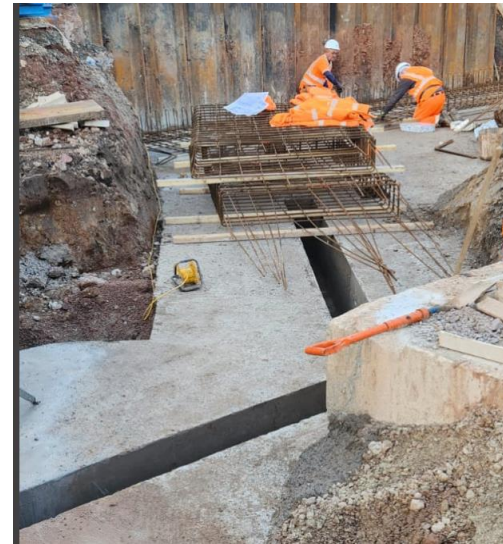
STAIRWAY ROOF CLADDING



LC LAMP HEADS INSTALLED



UTILITIES RETAINING WALL 1st
SECTION WALL POUR



2nd SECTION SHEAR KEY BASE
POURED AND BASE
REINFORCEMENT



P1 CANOPY CLADDING COMPLETE

Progress Update Moseley Village

WEST MIDLANDS RAIL
PROGRAMME



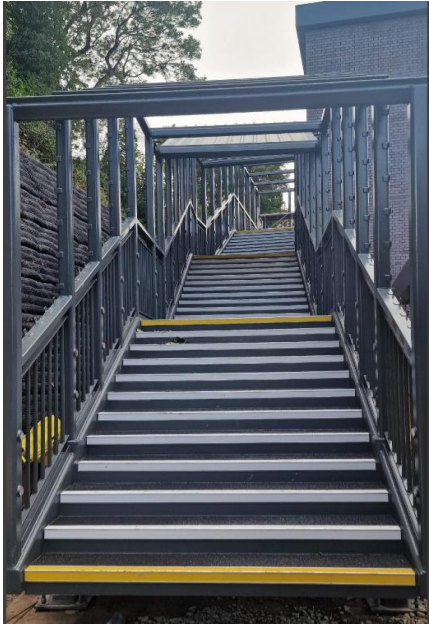
P2 LINK BRIDGE INSTALLED



P2 BASECOURSE



LMR M&E WORKS



P2 STAIRWAY



FORECOURT CIVILS



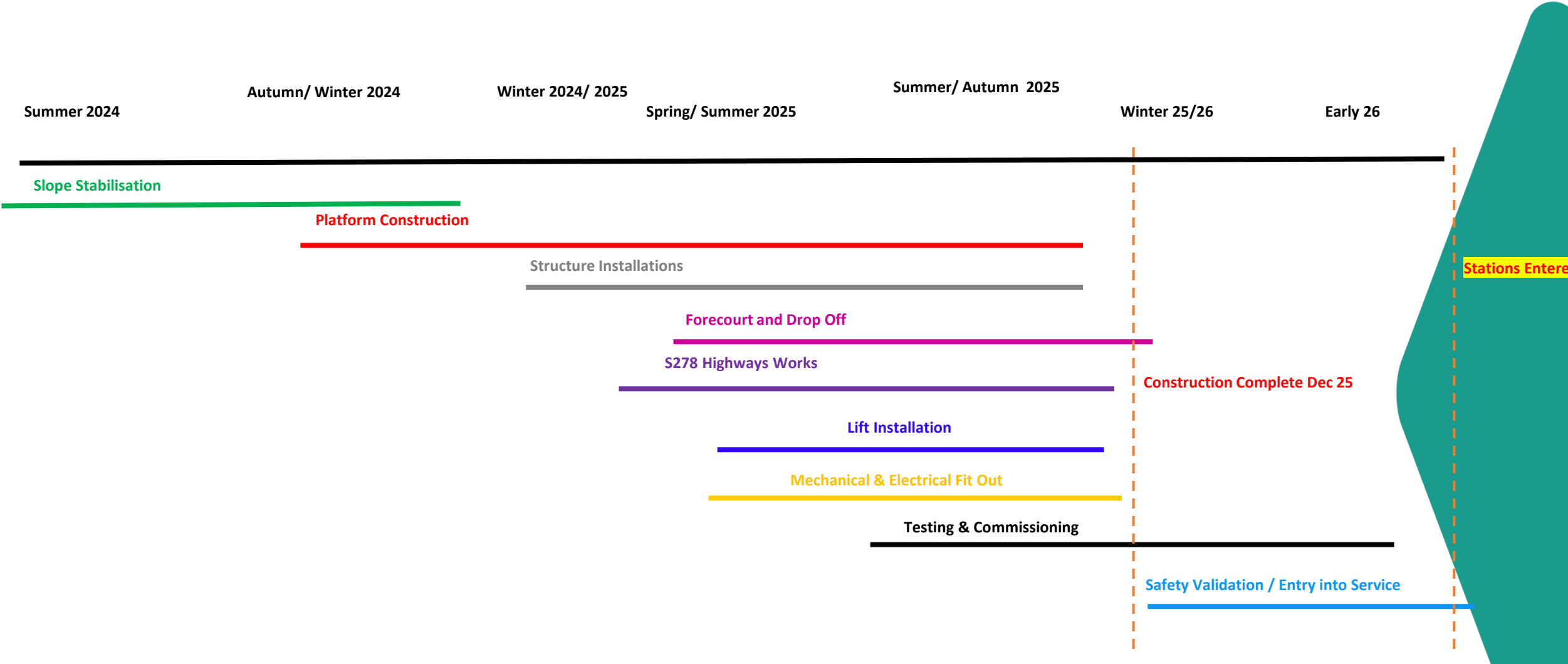
CONTIG WALL BRICKWORK COMPLETE

Project Update

WEST MIDLANDS RAIL PROGRAMME

- The station construction works are at a very advanced stage & is nearing completion. The construction & is expected to complete in December 2025.
- The bulk of the highway works at Kings Heath were completed in April 2025.
- There are some residual works that are currently being undertaken & will be completed end of this month.
 - Surfacing of the last of the southbound carriageway, paving flag remedials around the bus stop, kerb works & resurfacing of the footpath, Installing & commissioning the last of the traffic lights & crossing equipment.
- Highway works at Pineapple Road are progressing at pace & are scheduled to complete mid-Nov 25.
- For Moseley, Traffic Management (TM) has been in place since 15th Sep 25 to carry out advanced utilities works. External factors mean that there has been a delay to the proposed start date for the highway works. Construction works are expected to take 8 weeks upon approval from Birmingham City Council.
- Once these works are completed & the construction is complete, the next stage will be to progress with the EiS (Entry into Service) activities which will be driver training, test trains, testing & commissioning & regulatory approvals with the various industry bodies such as ORR (Office of Rail & Road), DfT (Department for Transport) & other key stakeholders.
- This period is an intense process as the project team readies the station for opening to passengers.
- Given that this will be over a period of change where WMT (West Midlands Trains) are going into public ownership, the project team will be working with DfT operator to ensure that the process is as smooth as possible.
- [Media Footage for Rail Magazine](#)

Indicative Project Milestones



Keeping you updated (and engaged)

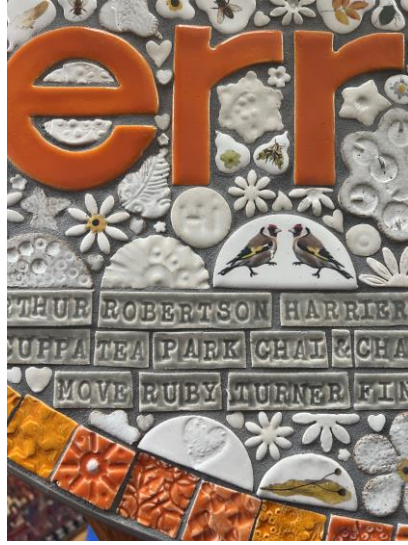
Our **Public Liaison Officer (PLO)** and **Behaviour Change Team** have been busy connecting with **residents, businesses, and stakeholders** across all three station sites, keeping everyone up to date on progress, especially highways works. Recent work has included:

- **Community Presence:** Hosting drop-in sessions, attending local markets/events (Kings Heath Pride, Moseley Folk Festival).
- **Direct Updates:** From door-knocking, to social media, to direct mailings – we've engaged with 1,000s of locals over the summer to keep them informed, and moving, when impactful highways work is underway.
- **Problem solving:** Our PLO is active within the community and picks up issues and as when they happen to help resolve them as soon as possible.

As we move towards opening there's lots we'll be leading on too, including:

- **Safety updates with local schools:** It's our number one priority and we're dedicated to running activities with local school activities.
- **Future Art:** We're currently scheduling community workshops to develop station artwork (Heritage Boards & Plaques) to ensure the stations reflect the amazing local communities which they'll serve.

Type of artwork being proposed



WEST MIDLANDS RAIL PROGRAMME

Example
artwork for
Heritage
Boards, Mosaic
artwork & the
Historic Kings
Heath Station
Sign



Travel Information



- 2 x trains per hour Monday – Saturday from Kings Norton - Birmingham New Street – Kings Norton. Proposed timetable is aspired to run between 0600 hrs-0700hrs to 2300-0000hrs.
- Hourly on Sundays, again in each direction, with the start of service 0900hrs-1000hrs until circa 2200hrs.



The fares are being proposed to be within Zone 3 category within the West Midlands (central Birmingham Stations are Zone 1). Tickets will be available to all destinations from the normal websites, apps and ticket machines located at the stations.



All stations will offer cycle storage facilities with limited capacity on the actual Class 196 diesel trains for onwards travel.



Phase 1 of a parking survey has been completed in Dec 24 for on-street parking to establish a baseline. Phase 2 will be carried out 6 months after station opening to ascertain any next steps.